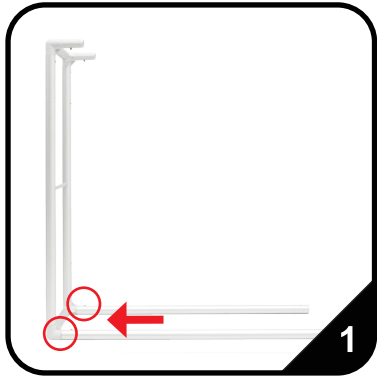


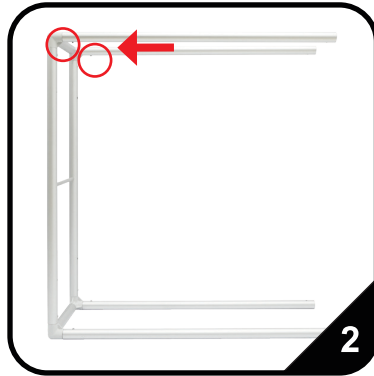
# SET UP INSTRUCTIONS

# Zip Up Fabric Counter



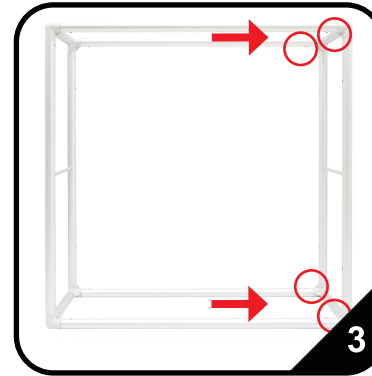
## Step 1

Slide the bottom horizontal tubes onto the side of the frame. Push in snap buttons and slide into hole to secure.



## Step 2

Slide the top horizontal tubes onto the side of the frame. Push in snap buttons and slide into hole to secure.



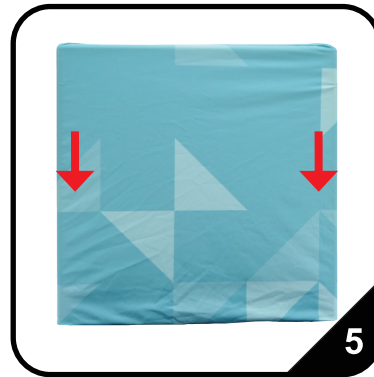
## Step 3

Then connect the other side of the frame.



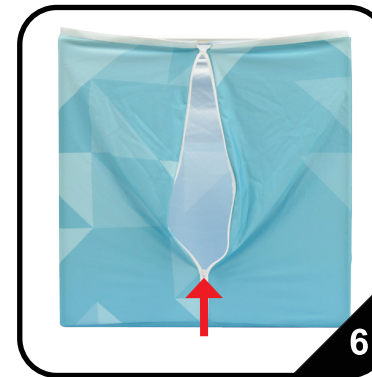
## Step 4

Unscrew the large head screws and put them aside. Make sure the holes are on top before installing the fabric.



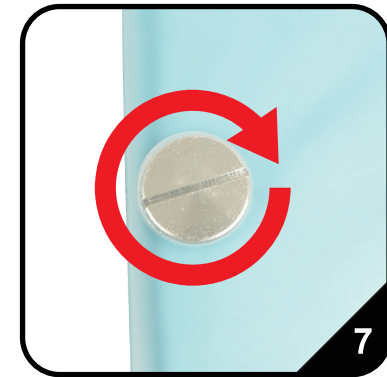
## Step 5

Drape the graphic over the frame and pull down to cover the frame. Make sure both holes are aligned with the holes in the fabric.



## Step 6

Flip the frame over. Zip up the back side. Pull over the bottom cover and zip up the bottom section. Flip the frame back over.



## Step 7

Place clear acrylic counter on top and align the holes. Insert and turn the large head screws using a flat head screwdriver to secure the counter to the frame.

# FABRIC CARE INSTRUCTIONS

This durable polyester fabric has been printed with water based dye sublimation inks. Our inks permanently dye the fabric with an eco-friendly water based ink, using a heat setting process. When done, the inks and fabric are completely washable.

When traveling with your fabric, try not to compress it too tightly within a box. The box that we have provided is the appropriate size with wiggle room for your fabric.

## Washing

You can place your fabric into a washing machine, as long as it fits, to get any dirt out. The drying process in a dryer creates very high heat, which is not recommended for your fabric. Please hang dry or use a low-heat, tumble-type setting.

## Steaming

We recommend using a steamer to remove creases and wrinkles.

## Lifespan

Your printed fabric will last many years with normal care. Slight fading may occur with multiple washes and may also occur when exposed to direct sunlight for a long period of time.

**Do not store in plastic. Store in a cool dry place.**

# FIRE CERTIFICATE

**SGS** GOVMARK

96-D Allen Boulevard  
Farmingdale, New York 11735-5828 USA  
Tel. +1 (631) 293-8944 Fax +1 (631) 293-8958  
email: govmark.accounting@sgs.com


Page 1

Received: 10/14/2019	Completed: 10/16/2019	Letter: S	JR	P.O.#:	Test Report #:	3-35015-0-
Client's Identification: Style: Vortex Soft Stretch D221. Composition: Polyester. Product End Use: Banners / Signage.						
Tested For: <b>Kylie Schleicher</b> Ultraflex Systems Inc. 1578 Sussex Tpk., Bldg. #4 Randolph, NJ 07869			Key Test: NFPA 701-2019 TM#1		275	
			Tel: 1-(973)-627-8608		Ext:	
			Fax: 1-( ) - -			
LE: 2019 NE: 2019 V: 01/19 NTR 04/16 PC: 0.5H DL/jd						
TEST PERFORMED: NFPA 701 - Standard Methods of Fire Tests for Flame Propagation of Textiles and Films - 2019 Edition - Test Method #1						
PRODUCT CONFIGURATION: <input checked="" type="checkbox"/> Single Layer; <input type="checkbox"/> Multi Layer						
RESULTS REPORTED: <input checked="" type="checkbox"/> Initially; <input type="checkbox"/> After 3 dry cleanings; <input type="checkbox"/> After 5 launderings @ 160°F						
RESULTS:						
Specimen #	Afterflame* (seconds)	Flaming Drip/Debris (seconds)	Weight Loss (percent)			
1	0	0	26.2			
2	0	0	20.0			
3	0	0	24.6			
4	0	0	24.6			
5	0	0	27.3			
6	0	0	27.3			
7	0	0	25.8			
8	0	0	24.6			
9	0	0	23.1			
10	0	0	21.2			
Mean:	0	Mean:	24.5			
STATISTICAL VALUES: SD = 2.4 3 SD = 7.3 Mean + 3 SD = 31.7						
ABBREVIATIONS USED: SD = Standard Deviation. NT = Not tested.						
APPROXIMATE WEIGHT OF MATERIAL (as measured by SGS Govmark): 215 g/m <sup>2</sup>						
PRECONDITIONING: <input checked="" type="checkbox"/> 0.5 hr @ 220°F (Standard) <input type="checkbox"/> 24 hrs @ 68±9°F (Alternate: Material shrinks/distorts @ 220°F)						
CONVERSION FACTOR: g/m <sup>2</sup> + 26.35 x .835 = oz/yd <sup>2</sup>						
NOTE:						

**SGS** GOVMARK

96-D Allen Boulevard  
Farmingdale, New York 11735-5828 USA  
Tel. +1 (631) 293-8944 Fax +1 (631) 293-8958  
email: govmark.accounting@sgs.com

Page 2

Received: 10/14/2019	Completed: 10/16/2019	Letter: S	JR	P.O.#:	Test Report #:	3-35015-0-
Client's Identification: Style: Vortex Soft Stretch D221. Composition: Polyester. Product End Use: Banners / Signage.						
Tested For: <b>Kylie Schleicher</b> Ultraflex Systems Inc. 1578 Sussex Tpk., Bldg. #4 Randolph, NJ 07869			Key Test: NFPA 701-2019 TM#1		275	
			Tel: 1-(973)-627-8608		Ext:	
			Fax: 1-( ) - -			
REMARKS:						
FAILURE CRITERIA: As cited by NFPA 701 - 2019 Edition Test Method #1						
Afterflame (Mean)	Flaming Drip/Debris	Weight Loss (percent) Mean	Individual Specimen			
*	Exceeds 2 seconds	Exceeds 40%	Exceeds Mean + 3 SD			
CONCLUSION: Based on the Results on page 1 and the above Failure Criteria cited by NFPA 701 - 2015 Edition Test Method #1, the item tested:						
CERTIFICATION: I certify that the above results were obtained after testing specimens in accordance with the procedures and equipment specified above.						
AUTHORIZED SIGNATURE SGS GOVMARK /ab			 Bobby Brown OCT 18 2019			
			/pm			

File Copy

The results contained in this report relate only to item(s) tested. The test report shall not be reproduced, except in full, without written approval from Govmark.

File Copy