

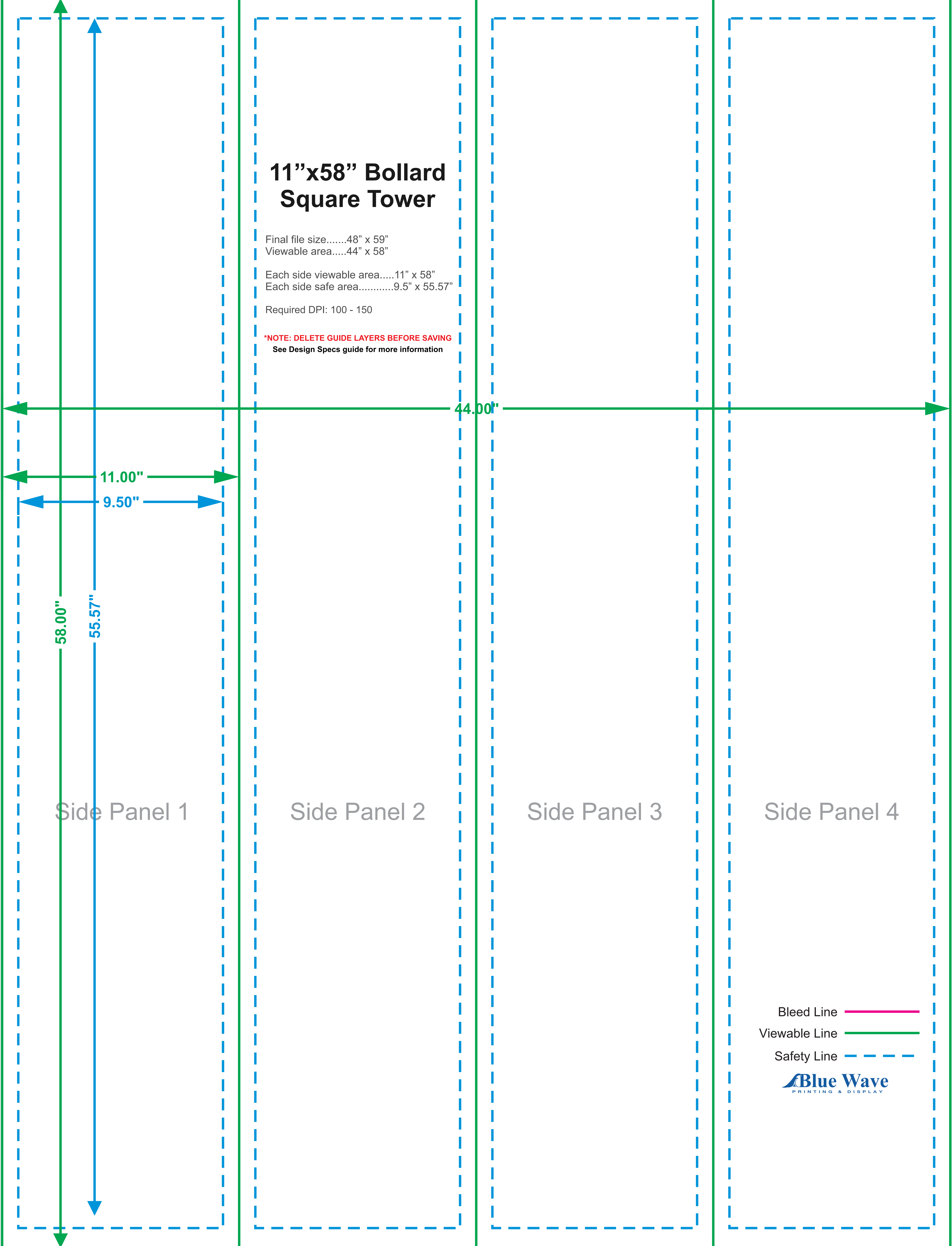
Inside Tab: non-viewable area

non-viewable area

# 11"x58" Bollard Square Tower

Final file size.....48" x 59"  
Viewable area.....44" x 58"  
Each side viewable area.....11" x 58"  
Each side safe area.....9.5" x 55.57"  
Required DPI: 100 - 150

**\*NOTE: DELETE GUIDE LAYERS BEFORE SAVING**  
See Design Specs guide for more information




Side Panel 1

Side Panel 2

Side Panel 3

Side Panel 4

Bleed Line 

Viewable Line 

Safety Line 